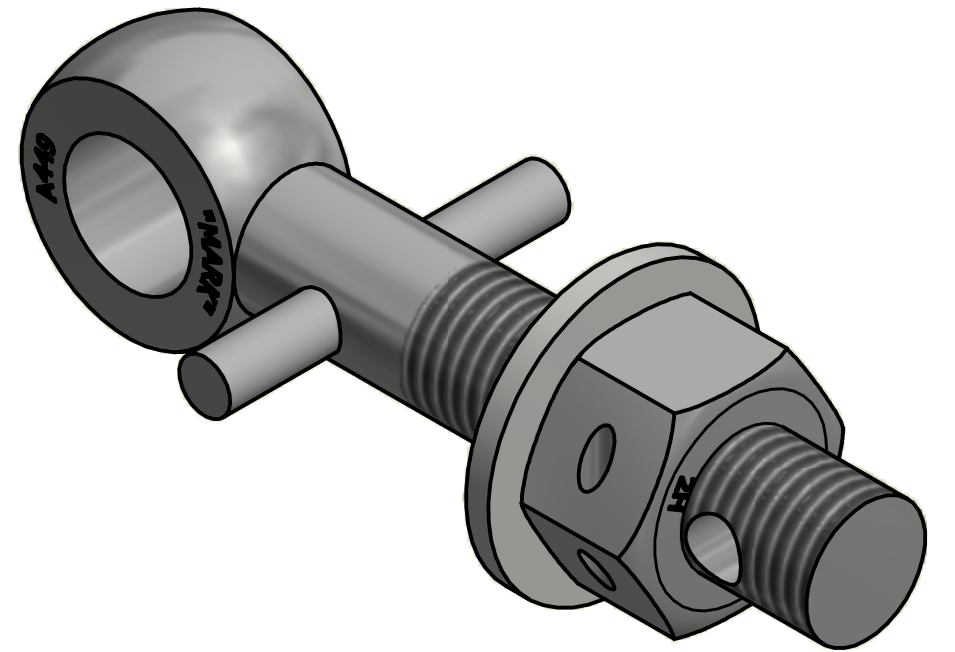
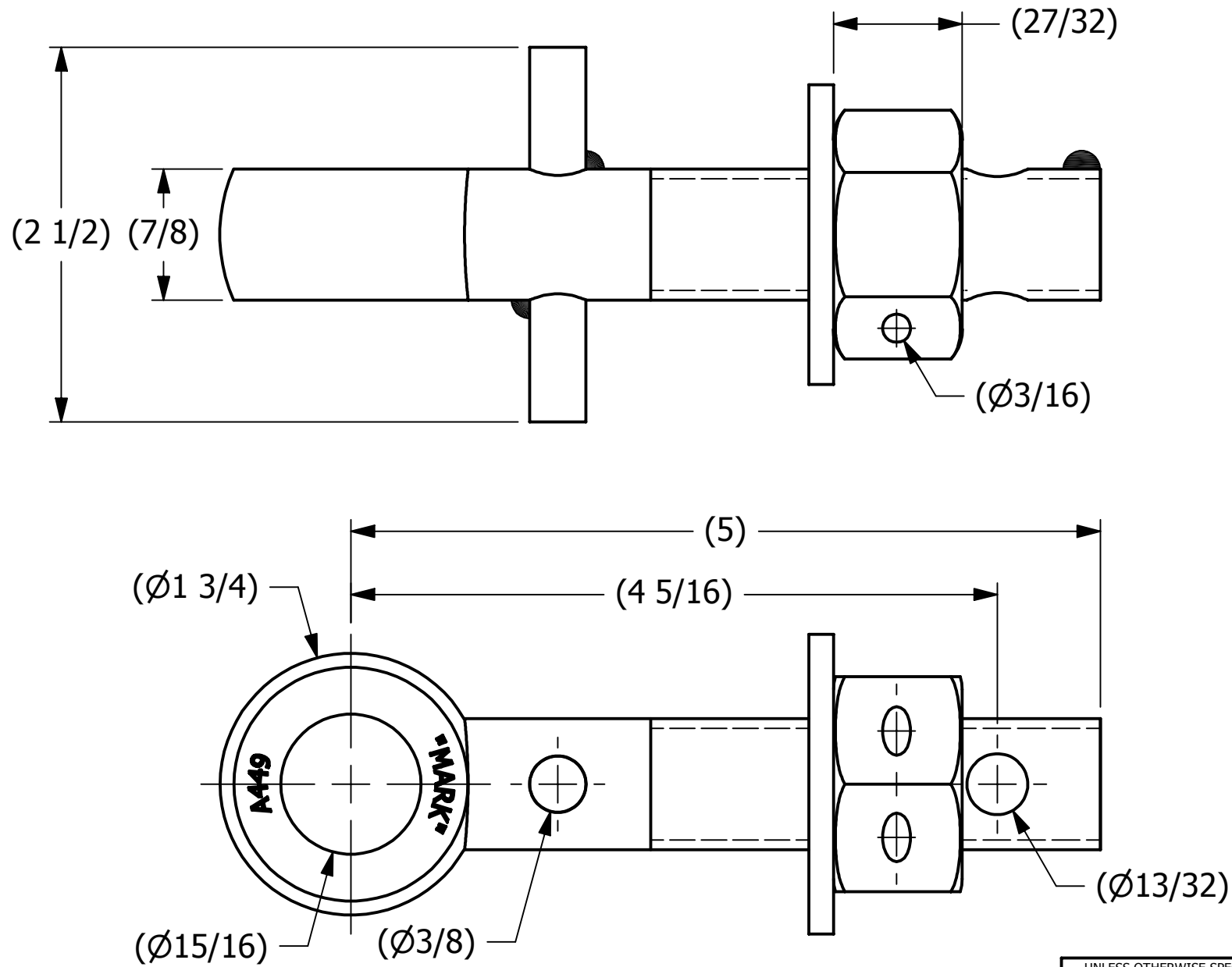


SALES DRAWING

SALES DRAWING



ISOMETRIC VIEW


NOTES:

1. JET LUBE(PFPE GREASE) APPLIED TO WORKING THREAD AREA,THE BOTTOM FACE OF THE NUT, AND THE TOP FACE OF THE WASHER.
2. BOLT STRENGTH EQUIVALENT TO SAE J429 GRADE 5.
3. WASHER IS ASTM F436 HARDENED.

THIS PRINT, PROPERTY OF SALCO PRODUCTS INC., CONTAINS PROPRIETARY INFORMATION AND MUST NOT BE COPIED, REPRODUCED, OR USED DETRIMENTALLY TO OUR INTEREST.

UNLESS OTHERWISE SPECIFIED DIMENSIONAL TOLERANCES	
FRACTIONAL:	$\pm\frac{1}{16}$
X.XX:	$\pm.03$
X.XXX:	$\pm.015$
ANGULAR:	$\pm 1^\circ$
DEBURR ALL SHARP EDGES. ALL MACHINED SURFACES TO HAVE A 125 RMS FINISH UNLESS NOTED OTHERWISE.	
THIRD ANGLE PROJECTION	

DRAWN BY:	KHK
CHECKED BY:	WRB
PROTOTYPE BY:	KHK
PROTOTYPE DATE:	9/9/2013
APPROVED FOR PRODUCTION BY:	WRB
PRODUCTION DATE:	9/10/2013

B	RJP	11-16-15	UPDATED MARKING & TITLE BLOCK			
A	KHK	9-10-13	RELEASED FOR PRODUCTION			
REV	BY	DATE	DESCRIPTION			
<div>SALCO PRODUCTS, INC.</div>						
PART NAME: EYEBOLT ASSEMBLY 7/8"X5"						
MATERIAL: A449 TYPE 1, CARBON STEEL						
PROJECT #:		130909FR	SHEET #:	1 OF 1	SCALE:	1:1
DRAWING #:			PART #:			
B37168			EB785XHHAG5PL			